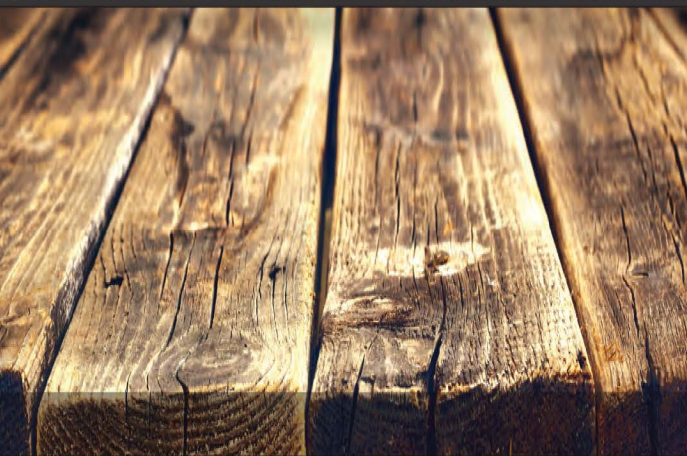




PINE RIDGE PARK

Campground & Rustic Cabin Rental



www.pineridgepark.com

YOUR HOSTS
Andrew & Wiesia

Campground Amenities

- Seasonal and weekender sites
- All sites are fully serviced with hydro
- All weekender sites include a picnic table
- 30-amp service sites include water/sewer
- Winter trailer storage available
- Washrooms include toilets & showers
- Coin operated laundromat
- Fish cleaning station
- Kids play area - Swings
- Volleyball/Basketball/Badminton/Shuffleboard
- Books, games and play equipment
- Kayaks (*free for customers*)
- Sandy beach - swimming - rafting
- Fishing and boating
- Boat launch & boat slips
- **Pet friendly campground**

**FREE
WI-FI** 



Rustic Cabin Rentals

Check-in: 3:00pm - Check-out: 11:00am

Our cabins are completely outfitted with all linens, towels, dishes, cutlery, pots and pans, and all major appliances including coffee maker, TV & satellite, microwave and propane BBQ. Most cabins have knotty pine walls and ceilings, are nicely appointed and very clean. All cabins are also winterized.

HERITAGE "1876" CABIN

3 Bedrooms

Built in 1876 with hand-hewn logs, pine floors & cathedral ceiling. Moved to Pine Ridge in 1976.



Sleeps 8



3-pc Bath



Fireplace

LAURENTIAN

4 Bedrooms



Waterfront



Sleeps 10



4-pc Bath



Fireplace



SLUMBER

2 Bedrooms



Sleeps 6



4-pc Bath



Fireplace



SLIPPER

2 Bedrooms



Sleeps 4



4-pc Bath



Fireplace



JACK PINE

Motel Suite w/Kitchen



Sleeps 2



3-pc Bath



RED PINE

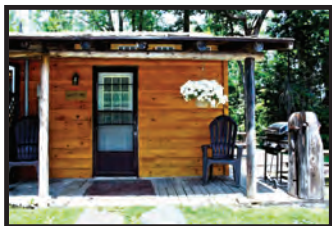
1 Bedroom



Sleeps 2



4-pc Bath



WHITE PINE

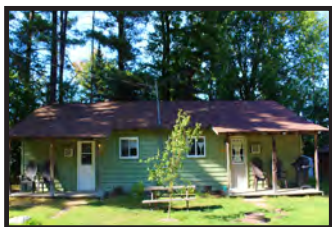
2 Bedrooms



Sleeps 8



4-pc Bath



TWIN 1 & 2

2 Bedrooms



Sleeps 4



3-pc Bath



PINE RIDGE PARK

PINE RIDGE PARK CAMPGROUND MAP



Local Attractions

- City of Pembroke
- Town of Petawawa
- Algonquin Park
- Nature Trails
- CFB Petawawa
- Museums
- Mini Putt / Golfing
- Theatres, Mall, Lounges
- Bonnechere Caves
- White Water Rafting
- Fiddling Competition (September)



GPS Coordinates: N45° 52min, 059sec; W077° 12.143 (enter Petawawa for town)

419 River Dr, Petawawa, ON - info@pineridgepark.com

Call for reservation: 613.732.9891 - 1.888.746.3743

Best fishing in the Ottawa Valley!

